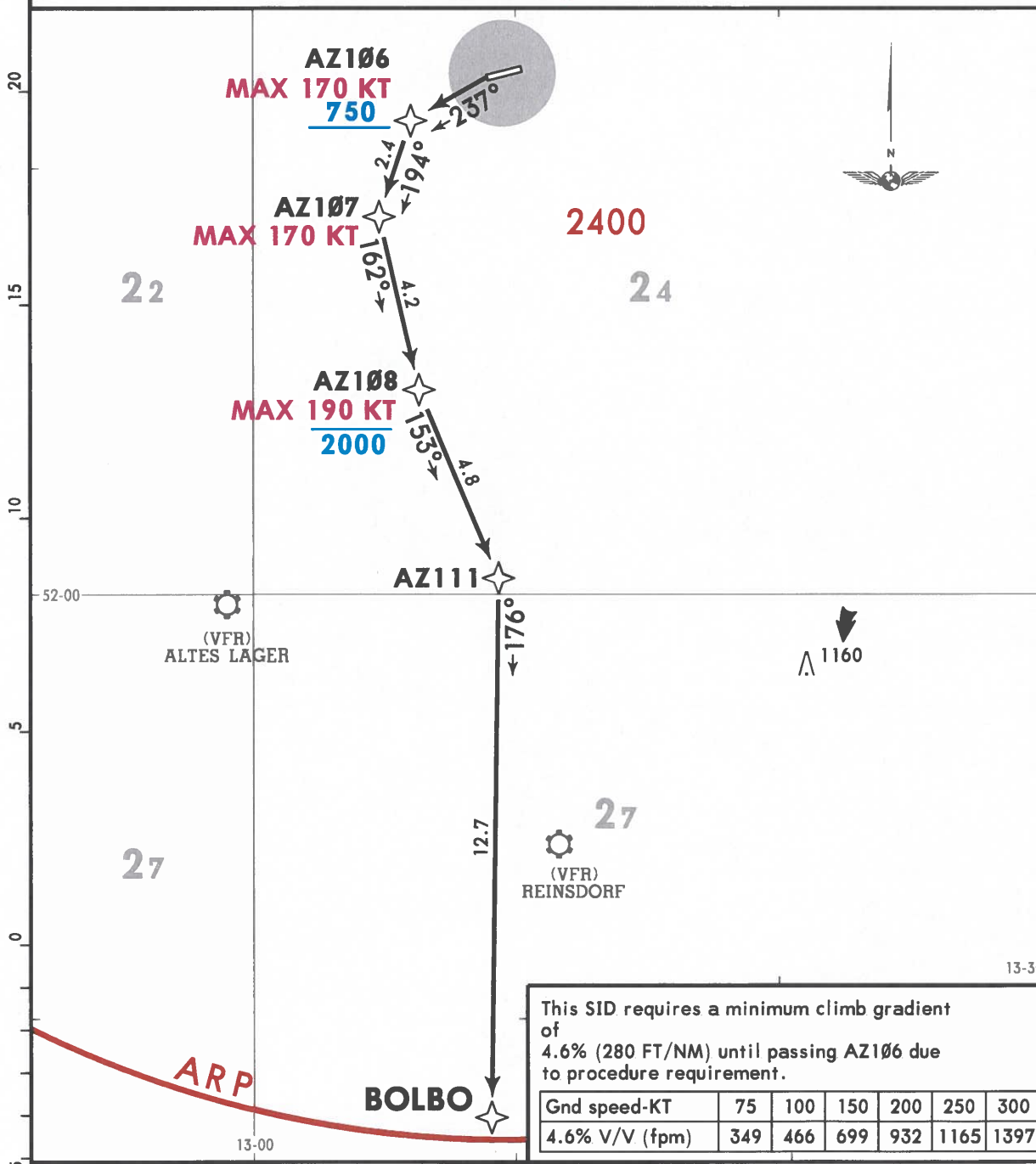


Apt Elev 152	Trans alt: 5000
BREMEN Radar (APP) 119.505X 120.630	RNAV-1 or RNP-1 or A-RNP equivalent ... GPS required DME/DME, DME/DME/IRU not authorized
*SCHOENHAGEN Information 131.155	1. Report passing 1200 to SCHOENHAGEN Information and contact BREMEN Radar. 2. Departures entering controlled airspace when passing 1000 AGL. 3. WARNING: Close-in obstacles. 4. SIDs are also noise abatement procedures. Strict adherence within the limits of aircraft performance is MANDATORY. 5. CAUTION: High altitude winchlaunches within airspace E at Reinsdorf and Altes Lager. 6. CAUTION: Extensive airports and VFR activity in airspace E unknown to ATC.

BOLBO 2A [BOLB2A]
RNAV DEPARTURE (RWY 25)
SPEED: MAX 250 KT BELOW FL100 OR AS BY ATC
NOT APPLICABLE WITHIN AIRSPACE C



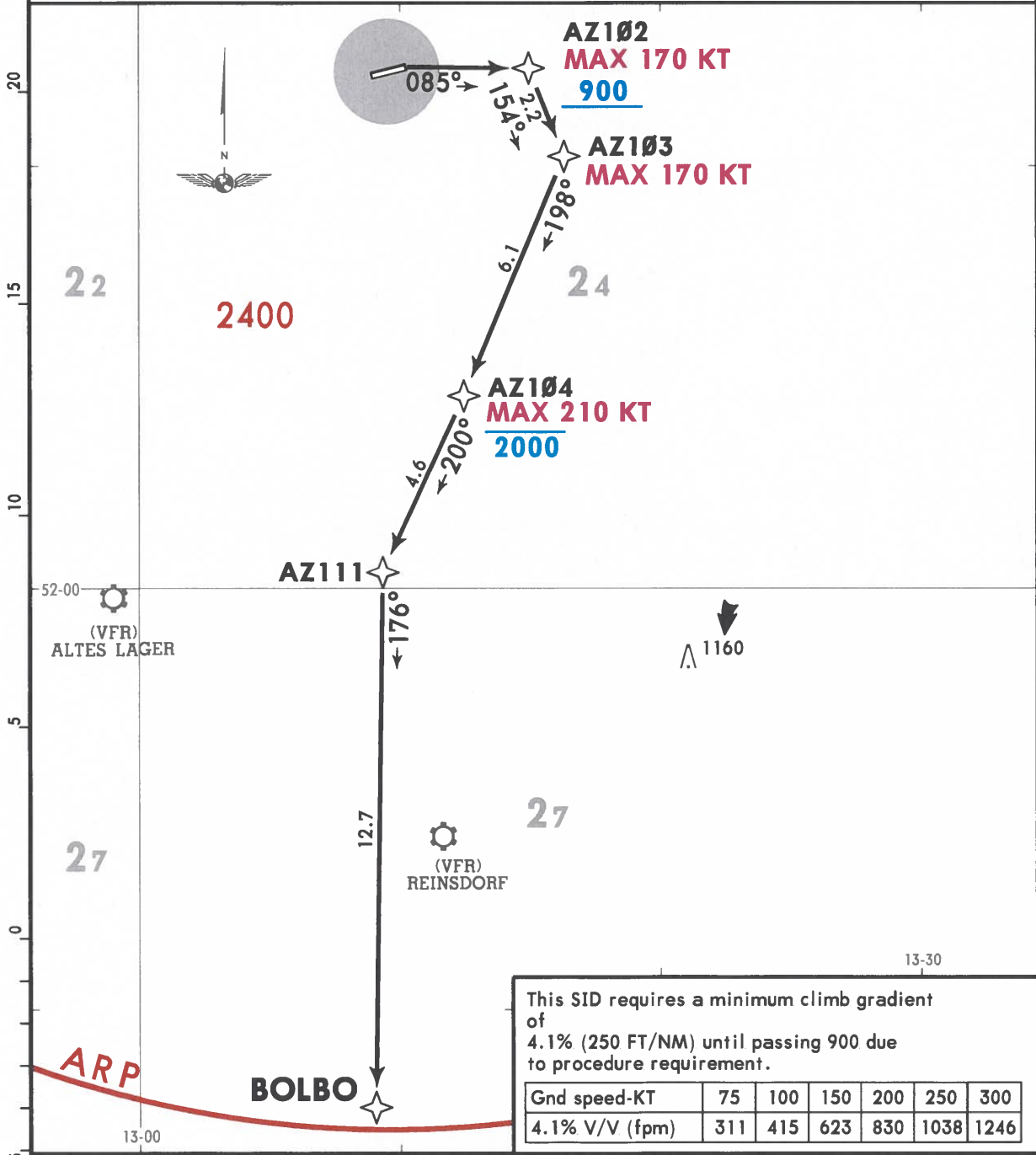
Initial climb clearance **2000**

ROUTING
Climb on 237° track to AZ106, turn LEFT to AZ107, turn LEFT to AZ108, turn LEFT to AZ111, turn RIGHT to BOLBO.

- NOT FOR NAVIGATIONAL USE -

Apt Elev 152	Trans alt: 5000
BREMEN Radar (APP) 119.505X 120.630	RNAV-1 or RNP-1 or A-RNP equivalent GPS required DME/DME, DME/DME/IRU not authorized
*SCHOENHAGEN Information 131.155	<ol style="list-style-type: none"> 1. Report passing 1200 to SCHOENHAGEN Information and contact BREMEN Radar. 2. Departures entering controlled airspace when passing 1000 AGL. 3. WARNING: Close-in obstacles. 4. SIDs are also noise abatement procedures. Strict adherence within the limits of aircraft performance is MANDATORY. 5. CAUTION: High altitude winchlaunches within airspace E at Reinsdorf and Altes Lager. 6. CAUTION: Extensive airports and VFR activity in airspace E unknown to ATC.

BOLBO 2N [BOLB2N]
RNAV DEPARTURE (RWY 07)
SPEED: MAX 250 KT BELOW FL100 OR AS BY ATC
NOT APPLICABLE WITHIN AIRSPACE C

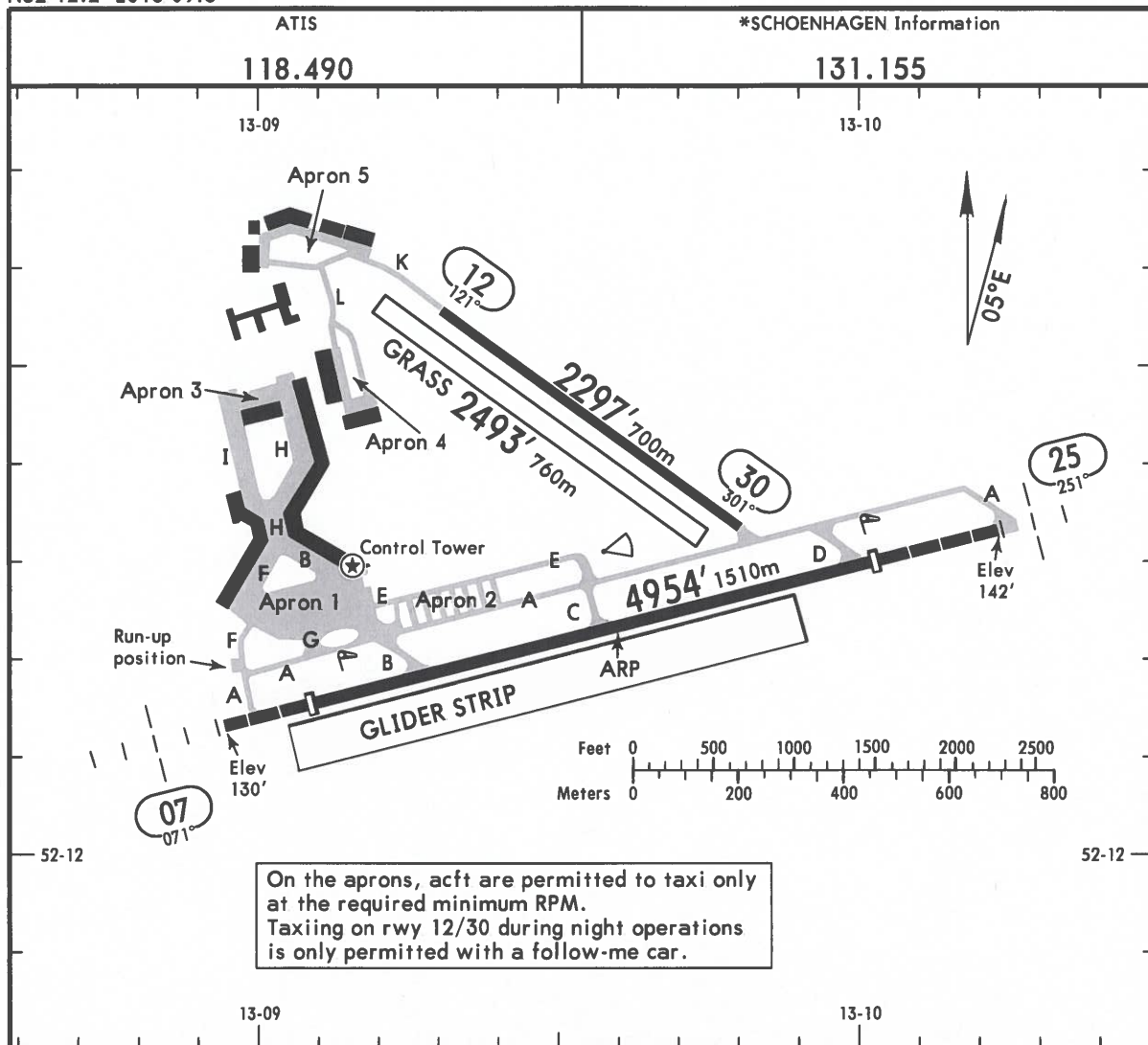


This SID requires a minimum climb gradient of 4.1% (250 FT/NM) until passing 900 due to procedure requirement.

Gnd speed-KT	75	100	150	200	250	300
4.1% V/V (fpm)	311	415	623	830	1038	1246

Initial climb clearance 2000
ROUTING
Climb on 085° track to AZ102, turn RIGHT to AZ103, turn RIGHT to AZ104, then to AZ111, turn LEFT to BOLBO.

- NOT FOR NAVIGATIONAL USE -



On the aprons, acft are permitted to taxi only at the required minimum RPM.
Taxiing on rwy 12/30 during night operations is only permitted with a follow-me car.

ADDITIONAL RUNWAY INFORMATION

RWY		RVR	USABLE LENGTHS		WIDTH
			Threshold	Glide Slope	
07	HIRL HIALS REIL		4396' 1340m		75'
25	PAPI-L (angle 3.5°, MEHT 17')		4167' 1270m		23m
12					59'
30					18m
12	Grass runway				131'
30					40m

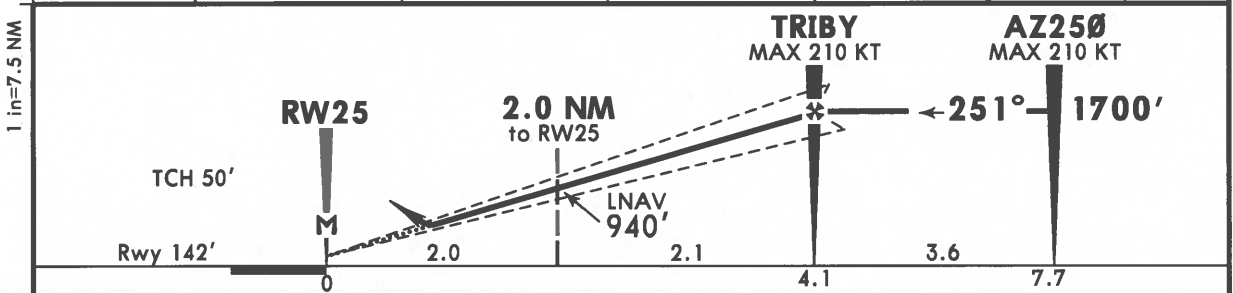
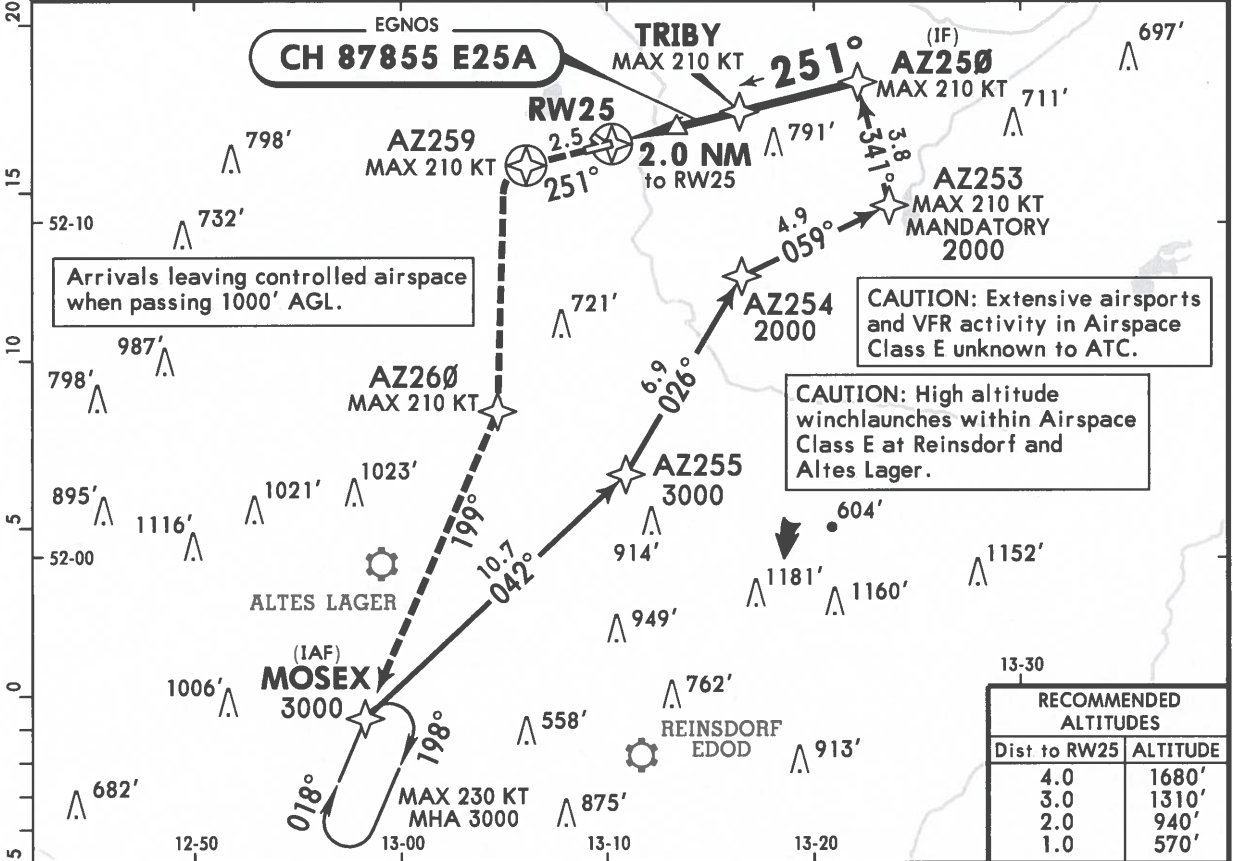
① Increased by 131'/40m safety strip.

Std/State		TAKE-OFF	
RCLM or RL	RL	Adequate Vis Ref	
DAY	NIGHT	DAY	NIGHT
R/V400m		R/V500m	NA

- NOT FOR NAVIGATIONAL USE -

**EDAZ
SCHOENHAGEN**

ATIS 118.490		BREMEN Radar (APP) 120.630 119.505X		BERLIN Arrival 121.130		*SCHOENHAGEN Information 131.155	
EGNOS Ch 87855 E25A		Final Apch Crs 251°		TRIBY 1700' (1558')		LPV CAT I DA(H) 692' (550')	
				Apt Elev 152'		Rwy 142'	
MISSED APCH: Climb on track 251° to AZ259. Then turn LEFT direct to AZ260 climbing to MAX 2000'. Then turn RIGHT to MOSEX climbing to 3000'.							2400
Alt Set: hPa (IN on req) Rwy Elev: 5 hPa Trans level: By ATC Trans alt: 5000'							
1. CAUTION: Sloping sand hill on short final. 2. Baro-VNAV not authorized below -15°C.							



Gnd speed-Kts	70	90	100	120	140	160	HIALS PAPI REIL AZ259 on 251°
Glide Path Angle 3.50°	434	557	619	743	867	991	
MAP at RW25							
Std/State		STRAIGHT-IN LANDING				CIRCLE-TO-LAND	
LPV CAT I		LNAV/VNAV				Not authorized North of airport	
DA(H) 692' (550')		A: 576' (434') DA(H) B: 588' (446') C: 600' (458')				DA/MDA(H) 690' (548')	
ALS out		ALS out				ALS out	
A	R1500m	R1500m				Max Kts 100 MDA(H) 690' (538') V1500m	
B	R1500m	R1500m				135 710' (558') V1600m	
C	R2300m R2400m	R1900m R2100m	R2300m R2400m		C NOT APPLICABLE		
D	NOT APPLICABLE						D

CHANGES: Communications. © JEPPESEN, 2018, 2025. ALL RIGHTS RESERVED.

- NOT FOR NAVIGATIONAL USE -